

# LeanTrack

RoundTrack systems  
**The new entry-level  
product for manual  
transport systems**



**STROTHMANN**



**STROTHMANN**

Machines & Handling

## LeanTrack: The entry-level product for the RoundTrack

LeanTrack is the new transport system for the RoundTrack. The standard cart is suitable for flexible use: from universal material transport to continuous assembly lines. Cost-effectiveness was prioritised during development of this system.

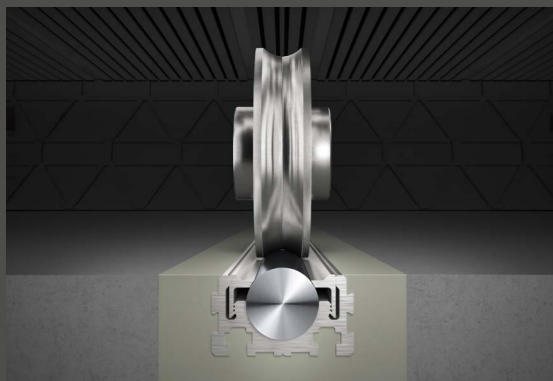
### Great convenience, short delivery times

Just two LeanTrack carts make it easy for a single person to move up to 5 t of weight. Returning the cart at the end of the transport route is also simple: LeanTrack can be rolled back to the starting point on wheels like a trolley suitcase. Yet another highlight is the simple configuration and ordering process for the system via the web shop as well as the short delivery time.



### Precise and reliable track guiding

The Strothmann RoundTrack is the basis for the highly precise and reliable cart track guiding function. The wheels ensure minimal rolling resistance while reliably guiding the system. This makes it possible to move even heavy loads with little energy input.



### Easy transport

up to 5 t can be pushed manually by a single person

### Smart return

simple cart return thanks to trolley principle

### Simple handling

transport cart weight as low as 18 kg

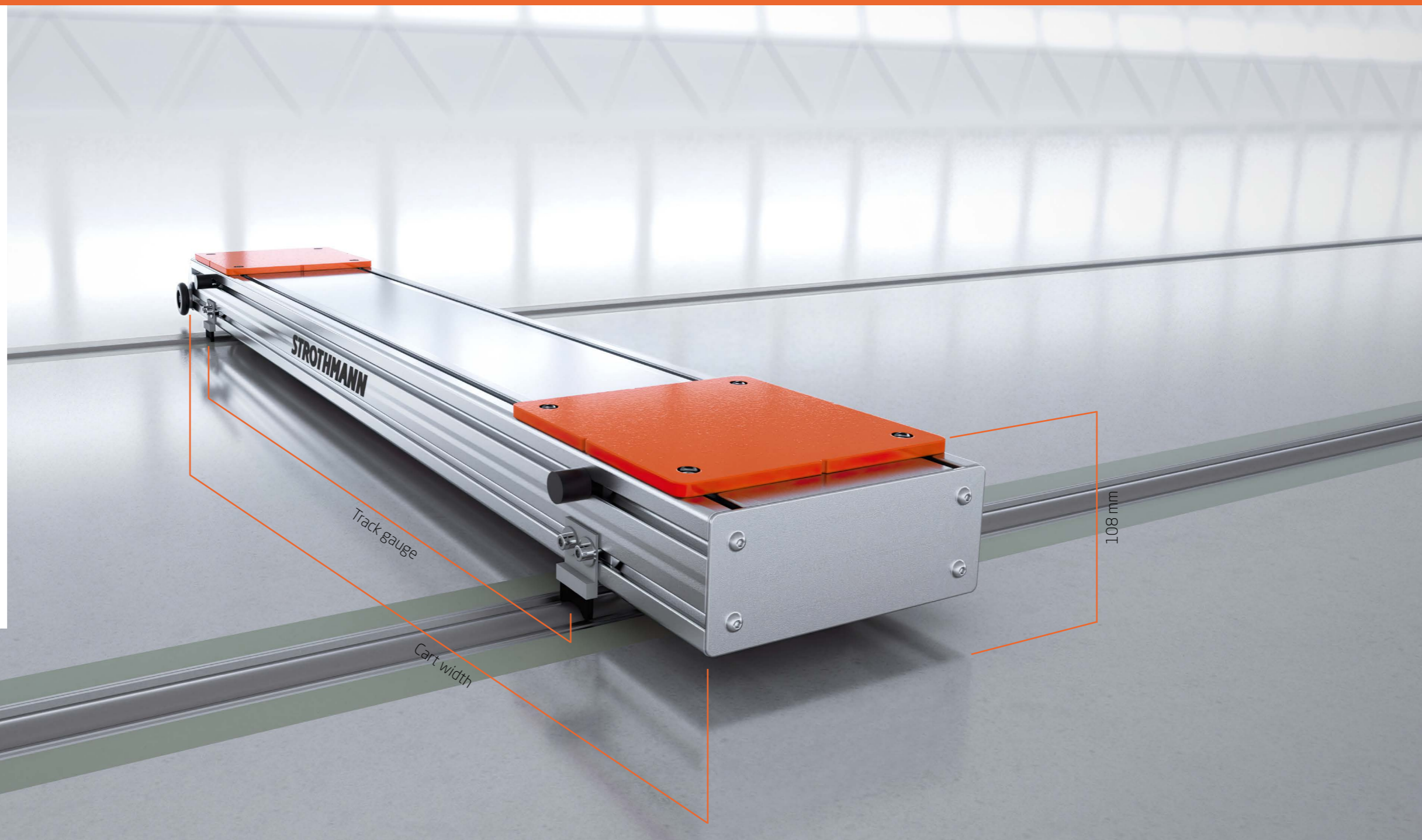
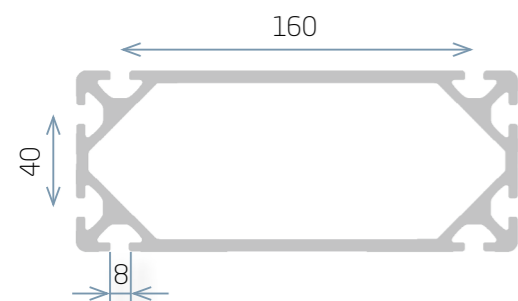
### Fast implementation

simple configuration, quick delivery and implementation



## LeanTrack: Aluminium carts

Combined with the RoundTrack, LeanTrack carts are a perfect solution for simple implementation of continuous flow production. LeanTrack makes it possible to move weights of up to 8 t on a system with minimum overall height and smart cart design. The profile contour permits integration of customised load mounting systems.



### Applications

- Manual continuous flow production for heavy loads
- 1 person can move loads of up to 5 t
- Combination with cycle drive and Movimax possible

### Max. load-bearing capacity

- up to 8 t per cart (assuming symmetric load distribution)

### Approx. dimensions (without accessories)

- Cart length: 200 mm
  - Cart height: 100 mm (distance of top edge of cart from floor level) plus 8 mm bonded blanks as load application surfaces
  - Cart width: 500 to 4,000 mm
  - Track gauge: cart width - 250 mm
- The customer selects the track gauge based on their products:  
The cart width is then calculated based on this value.

### Approx. weight (without accessories)

- 6.5 kg + 15 kg/m cart width
- Example (track gauge 1000):  $6.5 \text{ kg} + 15 \text{ kg/m} \cdot 1.25 \text{ m} = 25.25 \text{ kg}$

### Basic equipment

- Aluminium carrier profile with profile grooves for customised installation of attached components, wheels with axles, wiper brushes, lateral end plates, anti-slip bonded blanks as load application surfaces and to protect the cart surface, rubber/metal buffers

### Separate accessories

- Rolli kit (side handle and rollers), foot-activated brake, base pin arrangement, transport handle on the long side, MoviMax adapter, special surface paint for the carrier profile

### Notes

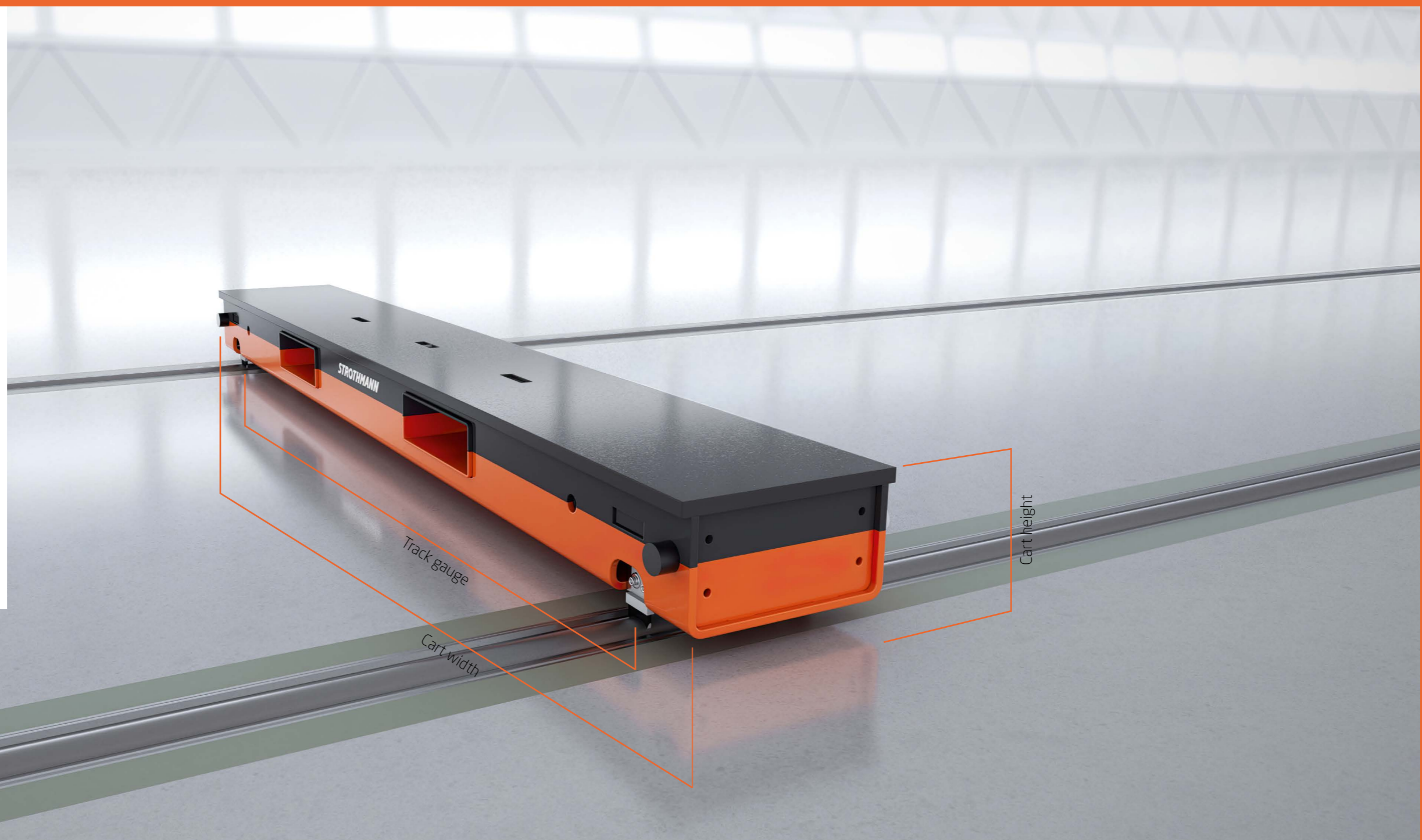
- For loads >5 t per cart the load must be placed directly above the RoundTrack at the centre of the load application surfaces
- For loads ≤5 t per cart the complete load application surface is available
- If you would like to transport multiple different products, additional tracks can be added for more load application surfaces on the cart. This would require individual consultation. The load application surfaces are the orange surfaces in this image

### Approx. delivery

- 6-8 weeks: purely delivery time – installation appointment to be coordinated

## LeanTrack: Steel carts

Steel carts are designed for greater loads: one cart can move up to 16 t. The steel version also has a greater loading surface than the aluminium cart. This is required for larger and more variable loads so that these can be transported with just one cart. Moreover the carts are equipped with a larger load accommodation area thanks to their sturdy welded structure. As an option, the steel version can also be equipped with a pneumatic lifting function. The lifting function simplifies material pick-up and deposit.



RoundTrack	RS25	RS40
<b>Max. load-bearing capacity</b>	<ul style="list-style-type: none"> <li>up to 8 t per cart (symmetric load distribution)</li> </ul>	<ul style="list-style-type: none"> <li>up to 16 t per cart (symmetric load distribution)</li> </ul>
<b>Approx. standard dimensions (basic equipment)</b>		
Cart length	<ul style="list-style-type: none"> <li>250 mm</li> </ul>	<ul style="list-style-type: none"> <li>320 mm</li> </ul>
Cart height	<ul style="list-style-type: none"> <li>150 mm</li> </ul>	<ul style="list-style-type: none"> <li>180 mm</li> </ul>
Cart width	<ul style="list-style-type: none"> <li>800 mm to 4.000 mm</li> </ul>	<ul style="list-style-type: none"> <li>1.000 mm to 4.000 mm</li> </ul>
Track gauge	<ul style="list-style-type: none"> <li>Cart width - 200 mm</li> <li>Different dimensions on request.</li> </ul>	<ul style="list-style-type: none"> <li>Cart width - 200 mm</li> <li>Different dimensions on request.</li> </ul>
<b>Approx. weight (without accessories)</b>	<ul style="list-style-type: none"> <li>80 to 285 kg</li> </ul>	<ul style="list-style-type: none"> <li>150 to 520 kg</li> </ul>

<b>Basic equipment</b>	<ul style="list-style-type: none"> <li>Robust welded structure, duo cassettes, wiper brushes, forklift pockets, thread for crane transport, rubber/metal buffers</li> </ul>
<b>Special equipment (on request)</b>	<ul style="list-style-type: none"> <li>Hole patterns and mounting rails on the cover plate and machined mounting surfaces for fastening your products and accommodation on the cart.</li> <li>Cover plate lifting function with a stroke of approx. 30 mm (external 6 bar compressed air supply required)</li> <li>Open forklift pockets pointing down for pick-up by industrial truck</li> </ul>
<b>Separate accessories</b>	<ul style="list-style-type: none"> <li>Foot-activated brake, base pin arrangement, MoviMax adapter</li> </ul>
<b>Notes</b>	<ul style="list-style-type: none"> <li>For loads &gt; 5 t per cart, the load must be placed with an offset of <math>\pm 150</math> mm above the RoundTrack.</li> <li>Loads that have to be placed on the complete cover plate of the cart have to be coordinated individually on request.</li> </ul>
<b>Approx. delivery</b>	<ul style="list-style-type: none"> <li>9-12 weeks: purely delivery time - installation appointment to be coordinated</li> </ul>

## LeanTrack: Steel carts+

Steel carts are designed for greater loads: one cart can move up to 36 t. The steel version also has a greater loading surface than the aluminium cart. This is required for larger and more variable loads so that these can be transported with just one cart. Moreover the carts are equipped with a larger load accommodation area thanks to their sturdy welded structure. As an option, the steel version can also be equipped with a pneumatic lifting function. The lifting function simplifies material pick-up and deposit.



RoundTrack	RS25	RS40
<b>Max. load-bearing capacity</b>	<ul style="list-style-type: none"> <li>up to 16 t per cart (symmetric load distribution)</li> </ul>	<ul style="list-style-type: none"> <li>up to 36 t per cart (symmetric load distribution)</li> </ul>
<b>Approx. standard dimensions (basic equipment)</b>		
Cart length	<ul style="list-style-type: none"> <li>500 mm to 3.000 mm</li> </ul>	<ul style="list-style-type: none"> <li>650 mm to 3.000 mm</li> </ul>
Cart height	<ul style="list-style-type: none"> <li>150 mm</li> </ul>	<ul style="list-style-type: none"> <li>180 mm</li> </ul>
Cart width	<ul style="list-style-type: none"> <li>800 mm to 4.000 mm</li> </ul>	<ul style="list-style-type: none"> <li>1.000 mm to 4.000 mm</li> </ul>
Track gauge	<ul style="list-style-type: none"> <li>Cart width - 200 mm</li> <li>Different dimensions on request.</li> </ul>	<ul style="list-style-type: none"> <li>Cart width - 200 mm</li> <li>Different dimensions on request..</li> </ul>
<b>Approx. weight (without accessories)</b>	<ul style="list-style-type: none"> <li>Based on individual project</li> </ul>	<ul style="list-style-type: none"> <li>Based on individual project</li> </ul>

<b>Basic equipment</b>	<ul style="list-style-type: none"> <li>Robust welded structure, duo cassettes, wiper brushes, forklift pockets, thread for crane transport, rubber/metal buffers</li> </ul>
<b>Special equipment (on request)</b>	<ul style="list-style-type: none"> <li>Hole patterns and mounting rails on the cover plate and machined mounting surfaces for fastening your products and accommodation on the cart.</li> <li>Cover plate lifting function with a stroke of approx. 30 mm (external 6 bar compressed air supply required)</li> <li>Open forklift pockets pointing down for pick-up by industrial truck</li> </ul>
<b>Separate accessories</b>	<ul style="list-style-type: none"> <li>Foot-activated brake, base pin arrangement, MoviMax adapter</li> </ul>
<b>Notes</b>	<ul style="list-style-type: none"> <li>For loads &gt; 5 t per cart, the load must be placed with an offset of <math>\pm 150</math> mm above the RoundTrack.</li> <li>Loads that have to be placed on the complete cover plate of the cart have to be coordinated individually on request.</li> </ul>
<b>Approx. delivery</b>	<ul style="list-style-type: none"> <li>9-12 weeks: purely delivery time - installation appointment to be coordinated</li> </ul>

## LeanTrack: Accessories

Mover MoviMax: For moving carts with a total weight of up to 25 t on the RoundTrack. Permits simple handling of heavy loads by a single person. Pushing and pulling transport is possible.



### Handles for simple return transport

The handle is installed on the front of the LeanTrack cart and permits simple return transport when combined with the carrier wheels.



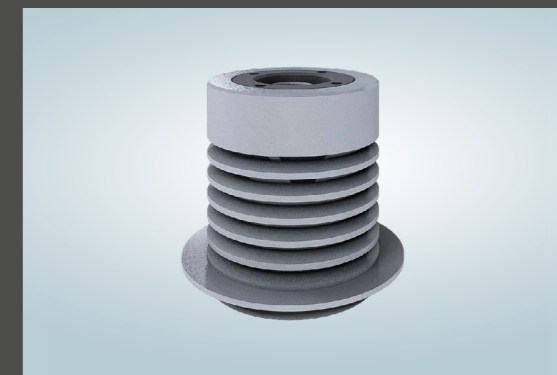
### Carrier wheels for simple return transport

Together with a handle, the carrier wheels offer a simple option for returning the LeanTrack from the end of the route to its start. This transport is based on the trolley principle.



### Base pin arrangement

For locking a cart in a fixed position. The pin is inserted in a floor sleeve.



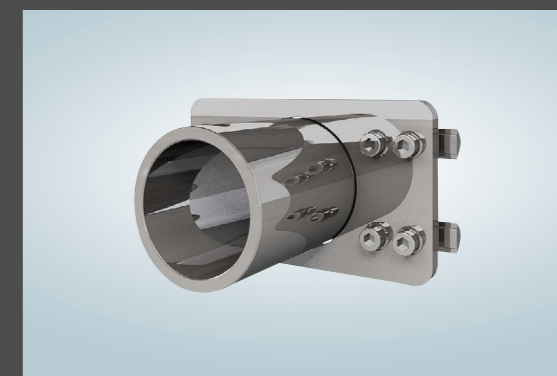
### Floor sleeve

Required for using the base pin arrangement installed on the cart. The floor sleeve is a complementary product for the base pin arrangement.



### Foot-activated brake

For easy locking of an empty cart with your foot.



### MoviMax adapter

This Mover connection is required for use of the battery-powered MoviMax.

# You are looking for an affordable standard material transport cart?

You've found it! Contact our RoundTrack experts:  
+49 5207 9122 265 | [sales@strothmann.com](mailto:sales@strothmann.com)

Learn more: [www.strothmann.com/en/leantrack](http://www.strothmann.com/en/leantrack)  
Configure your product: [shop.strothmann.com](http://shop.strothmann.com)

## Headquarters

### STROTHMANN Machines & Handling GmbH

Altenkamp 11  
33758 Schloß Holte-Stukenbrock  
Germany  
Phone: +49 5207 9122 0  
E-mail: [info@strothmann.com](mailto:info@strothmann.com)

## Global presence

### Australia, New Zealand

Siempelkamp Pty. Ltd.  
+61 3 9596 7577  
[thiago.k@siempelkamp.com.au](mailto:thiago.k@siempelkamp.com.au)

### Czech Republic, Slovakia

Sales office Czech Republic and Slovakia  
+420 519 322 689  
[jjiri.bartos@teprostroj.com](mailto:jjiri.bartos@teprostroj.com)

### Mexico

In-Tech Automation  
+52 844 255 9194  
[ventas@intech-automation.mx](mailto:ventas@intech-automation.mx)

### USA

Strothmann Machines & Handling  
+1 312 982 2770  
[sales@strothmann.com](mailto:sales@strothmann.com)

### Brazil

Siempelkamp do Brasil Ltda.  
+55 41 3232 6806  
[frederico.marques@siempelkamp.com](mailto:frederico.marques@siempelkamp.com)

### Finland

ATP-trading Oy  
+358 9 341 77 514  
[petri.kuusisto@atp-trading.fi](mailto:petri.kuusisto@atp-trading.fi)

### Netherlands, Belgium

Wissekerke Techniek BV  
+31 187 490290  
[info@wissekerke.nl](mailto:info@wissekerke.nl)

### China

Strothmann Machines & Handling  
Trade (Shanghai) Co. Ltd.  
[shanghai@strothmann.com](mailto:shanghai@strothmann.com)

### France

Sales office France  
+33 608 755298  
[gerd.schaefer@orange.fr](mailto:gerd.schaefer@orange.fr)

### North America

Linear Automation Inc.  
+1 705 735 0000  
[sales@lineartransfer.com](mailto:sales@lineartransfer.com)

Information about the properties and application of products does not constitute a guarantee of properties, but is only intended for information purposes. The decisive factor for the scope of our delivery is the respective contract. RoundTrack® and uTrack® are registered trademarks by Strothmann Machines & Handling GmbH. Other designations used in this publication may be trademarks whose use by third parties for their own purposes could violate the rights of the owners.

© Strothmann Machines & Handling GmbH 12/2023



**STROTHMANN**  
Machines & Handling